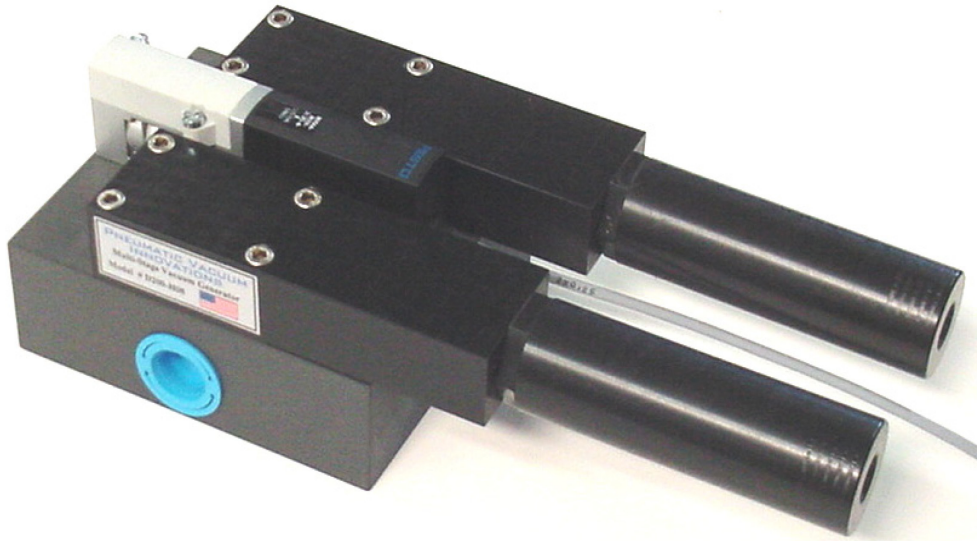


DX400 Vacuum Manifold Assembly

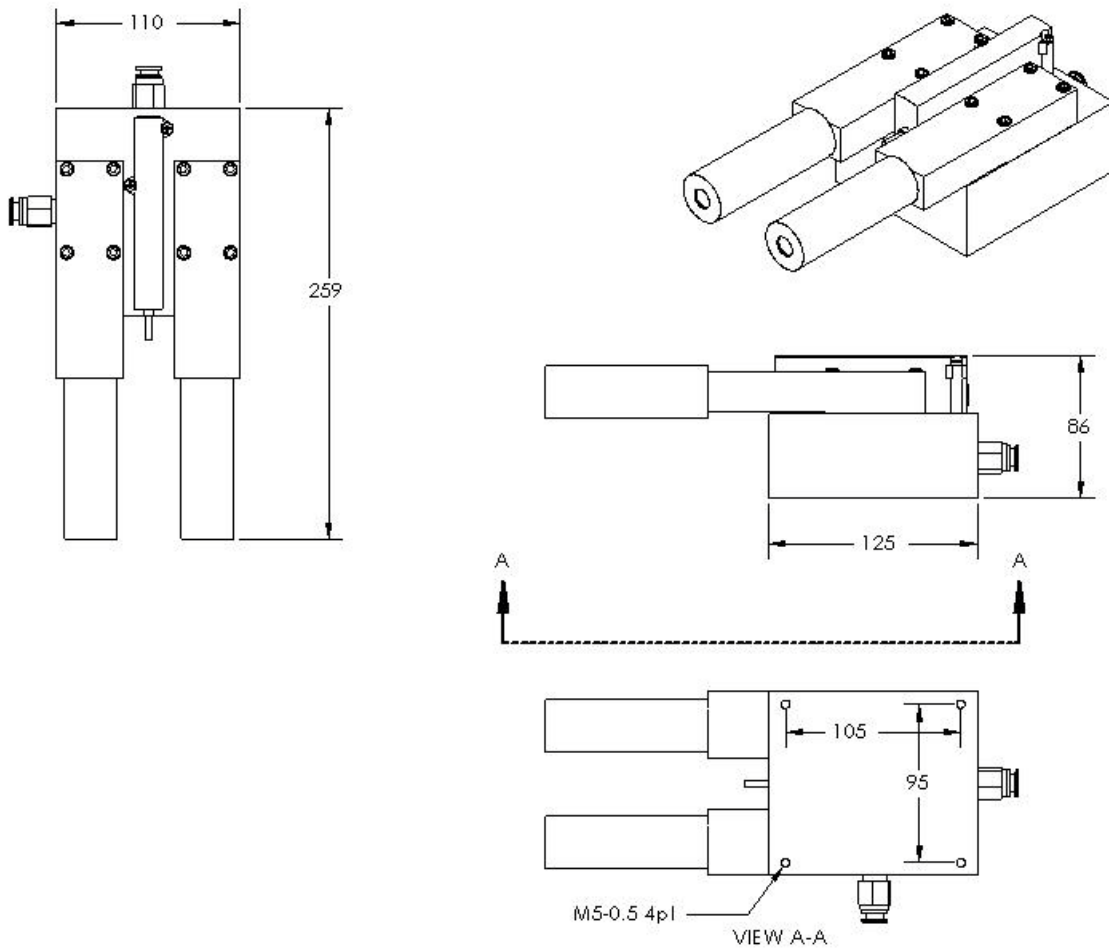


The DX400 Vacuum Manifold Assembly has been designed to address industry's varied vacuum demands. The manifold contains two tandem vacuum generators that are actuated by a single adjacent valve. The attached direct acting solenoid valve provides external electrical control. There are two tandem non-return vacuum valves built into the manifold body. All components are direct mounted utilizing O ring connections thus allowing servicing to be performed easily with simple tools.

DX400 Vacuum Manifold Assembly Specifications	
Quantity generators	2
Generator types	D200-H08 Multi-stage D200-H08 Multi-stage
Ultimate Vacuum	27 in-Hg
Induced Flow	24 scfm
Air consumption	12.8 scfm @ 60 psi
Operating pressure	60 -75 psi
Noise Level	62 db (open flow) / 55 db (closed flow)
Valve	24 VDC, 5.6 W, N.C., IP95, Manual Override
Materials	Acetal, PVC, Stainless steel, Aluminum
Ports	12 mm Vacuum, 8 mm Pressure (tubing)
Mounting	95 mm by 105 mm 5mm treads F
Mass	1.75 Kg

DX400 Vacuum Manifold Assembly

Dimensional data



Note: All Dimensions in Millimeters